

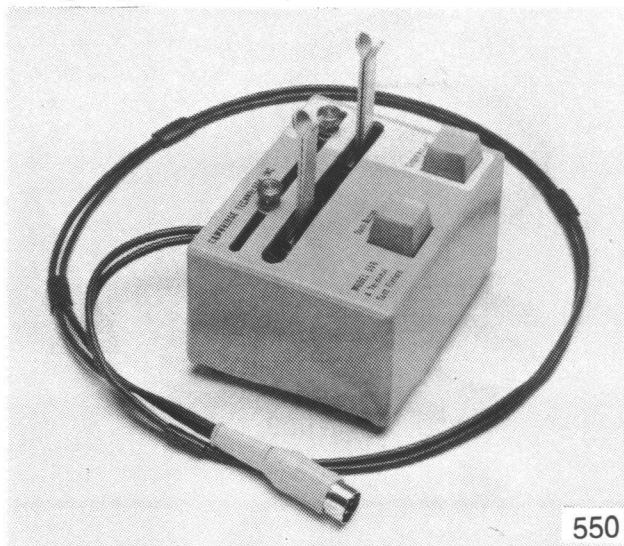
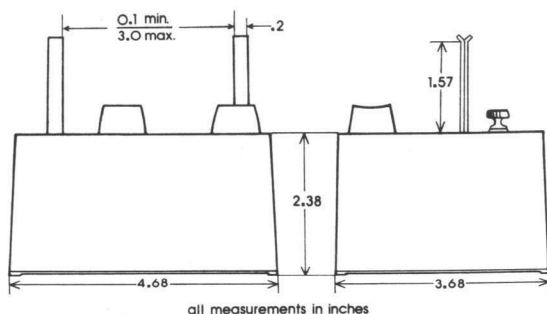
CLIPS, PROBES, TEST-FIXTURES

All test clips are of the Kelvin type which allows 4-terminal measurement of circuit parameters. The component under test is driven with 2 terminals and the response is sensed with the remaining 2, thus removing the effect of the test lead capacitance and resistance and also avoiding errors that can result with both small and large value components. There is no need to attach 4 separate wires to the test component, which is time-consuming and error-prone.

Model 550 4-Terminal Kelvin Test Fixture

The Model 550 component test fixture can be used in conjunction with any RLC impedance measurement instrument. The electrical contacts provide 4-terminal measurement capability and are rugged and durable, yet still permit single hand insertion of both axial and radial lead components. The contacts can be adjusted for lead spacing of 0.1 to 3 inches, allowing a wide range of components up to 3 inches in diameter to be tested.

A push button allows both electrical contacts to be held open simultaneously so that components with very fine leads can be inserted conveniently. A second push button allows each set of contacts to be individually opened for components with flying leads such as coils or transformers.



Model 501 4-Terminal Kelvin Clips

The Model 501 test clips are fully insulated and their 1/4 inch jaw openings will accommodate almost any electronic component. They have miniature tips for grasping very fine wires and other tiny items. Lead length is 1 meter.



Model 502 4-Terminal Kelvin Clips, Unwired

Pair of clips, same as Model 501, but unwired.

IET LABS, Inc.
534 Main Street
Westbury, NY 11590

501, 502

Model 503 4-Terminal E-Z Hooks

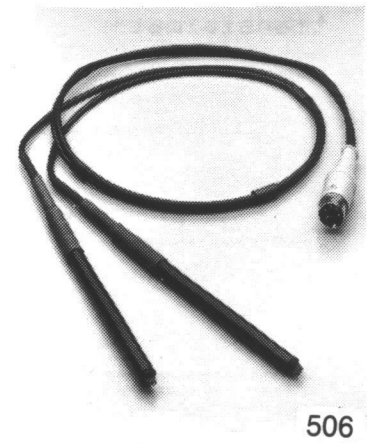
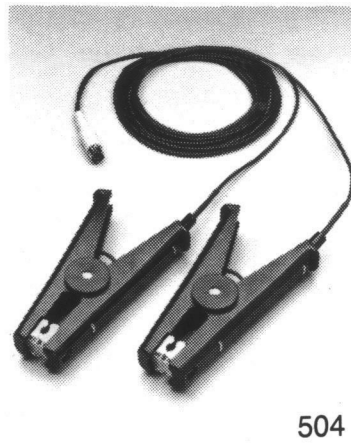
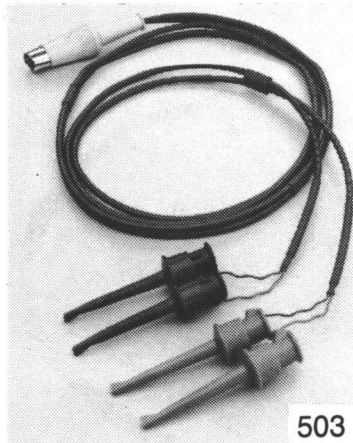
Useful for components or terminals, such as switch and connector contacts, which are difficult to connect to with standard kelvin clips. Lead length is 1 meter.

Model 504 4-Terminal Heavy-Duty Kelvin Clips

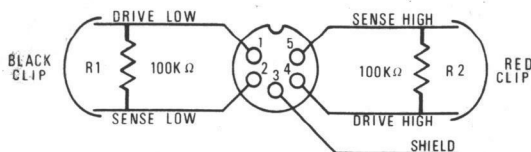
The Model 504 probe set has 1.75 inch jaw openings and 12 foot lead lengths that permit measurements on large bushings, welded and bolted joints, rails and pipes, transformers and motors, fuses, power distribution busses or nearly any other large electrical components.

Model 506 4-Terminal Kelvin Micro-probes

The Model 506 micro-probes permit measurement of circuit board components and fine conductor traces. They also make measurements possible in areas which are inaccessible to other probes, such as inside a connector. The finely-pointed, spring-loaded tips are on .050 inch centers, are made from hardened-steel and are replaceable. Lead length is 1 meter.



Connector Wiring for all Accessories



Connector is Switchcraft part #12GM5M. Mates to Switchcraft 61PC6F (PC Mount) or 61GA5F (Chassis Mount).

IET LABS, INC.
534 Main Street
Westbury, N.Y. 11590
(516)334-5959